



A PEARSON VUE BUSINESS

Autodesk Certified User (ACU) Exam Tutorial

2023 Inventor - Next Generation

Autodesk Certified User: Inventor 2023 - Metric

- This exam has **30 - 35** questions.
- The maximum exam time is **50** minutes.

Exam Process

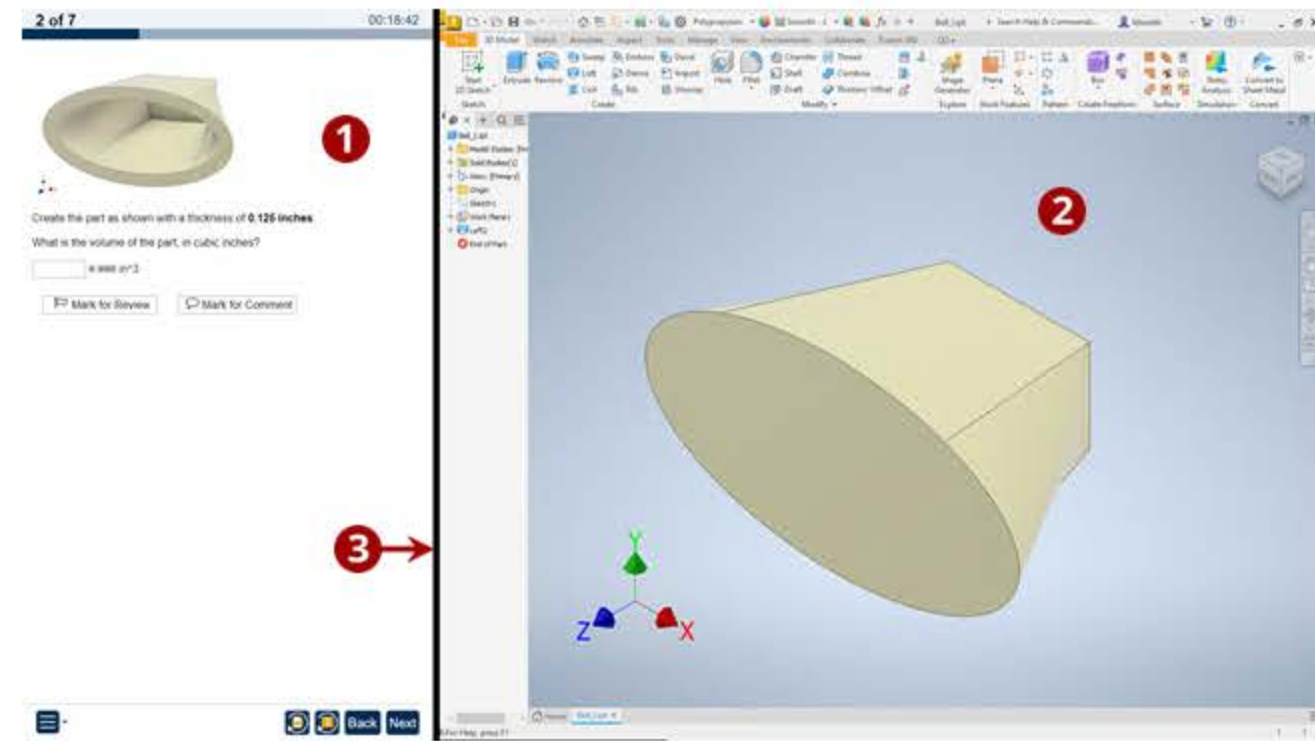
The exam experience follows this process:

1. **Tutorial.** The tutorial provides helpful information about the exam environment. **Read the tutorial carefully.** When you are ready to begin taking the exam, select **Start Exam**.
2. **Exam Questions.** The exam timer starts and the questions appear. You can move forward and back through them, answer them, and mark them for review or feedback.
3. **Exam Summary.** The exam summary indicates the questions you have answered, not answered, marked for review, and marked for feedback. You can review and change your answers. The exam timer stops and your answers are submitted when you select **Finish Exam**.
4. **Feedback.** You can leave feedback about the exam and individual questions. When you finish leaving feedback, select **Exit Exam** to display your score report.

Autodesk Certified User: Inventor - Metric

Exam Interface and Controls

When the questions section is launched, the exam panel **1** will appear on the left and Inventor **2** will appear on the right.



You can change the size of the exam panel by dragging the vertical edges **3** between the exam panel and Inventor. As long as Inventor is maximized, the edge of the test panel and Inventor will move together. If you click Restore Down **4**, the vertical edges will no longer move together and Inventor can be moved to a second monitor.



Exam Panel

The exam panel has three panes, the Information pane **1**, the Content pane **2**, and the Navigation pane **3**.

1 2 of 7 00:18:42



2 Create the part as shown with a thickness of **0.125 inches**.
What is the volume of the part, in cubic inches?

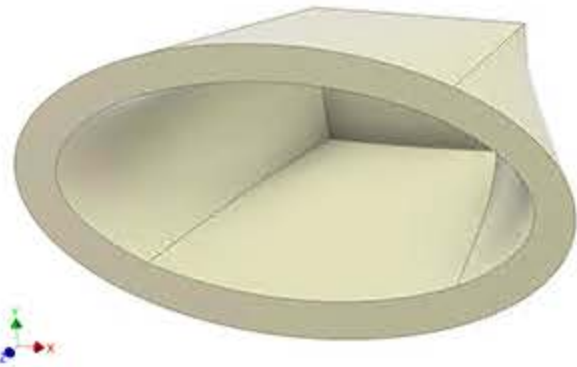
#.### in^3

3

- 1** The **Information** pane at the top of the exam panel shows the current question number, the total number of questions, and the remaining exam time. The progress bar fills to indicate the percentage of questions visited.
- 2** The **Content** pane in the center of the exam panel contains an instruction statement and the questions to be answered using the current data file.
- 3** The **Navigation** pane at the bottom of the exam panel contains buttons and options for moving through the exam.

Question Options

On the exam panel, when you expand a question, you will be given instructions on what task(s) to perform in Inventor. After you complete the tasks, you will return to the exam panel to answer the question. Each question title contains icons to help you see which questions have been answered and which you have marked for review. Each question includes the options described below.



Create the part as shown with a thickness of **0.125 inches**.

What is the volume of the part, in cubic inches?

#.### in^3 ← 2

Unmark for Review

Unmark for Comment



1 Mark/Unmark for Review



This question is marked for review on the Exam Summary page.



This question is not marked for review on the Exam Summary page.

2 Answer Hints

Number signs (#.###) are displayed next to the answer field to indicate the number of decimals the answer should be given in. For example:

- ____#.### kg indicates an answer of **1.234 kilograms**
- ____#.### mm indicates an answer of **1.234 millimeters**
- ____#.### m^3 indicates an answer of **1.234 cubic meters**
- ____#.### lbmass indicates an answer of **1.234 pounds**
- ____#.### in indicates an answer of **1.234 inches**
- ____#.### in^2 indicates an answer of **1.234 square inches**

3 Mark/Unmark for Comment



This question is marked to remind you to leave feedback about the question.



This question is not marked to remind you to leave feedback about the question.

Additional Instructions

- Although some applications allow you to copy values and paste them into the exam, you need to be aware that leading or trailing spaces might cause numbers to be missing. If you choose to use Copy/Paste, make sure to **verify the pasted value**.
- Answers are not case sensitive.
- Decimals can be expressed by either periods or commas.
- Leading or trailing zeros will not affect your score.
- If the exam panel is too narrow to display the question content, either make the panel wider or scroll to the bottom of the question and use the horizontal scrollbar.
- You can use Ctrl+(+) and Ctrl+(-) to control the size of the content within the exam panel. Ctrl+0 will reset the content in the exam panel to the default size.

Tools ▾

Skip Tutorial

Back

Next

Autodesk Certified User: Inventor - Metric

Navigation Pane

The Navigation pane at the bottom of the page contains buttons and options for moving through the exam.



The buttons collapse into icons as you decrease the width of the exam panel.



The **Tools** menu contains the following options:

- Go To Summary: This option takes you to the Exam Summary page.
- Instructions: This option gives you some instructions on how to use the exam panel.
- Calculator: This option displays the calculator.
- Color Scheme: This option allows you to change the color scheme to Black on White or White on Black.

1

2

3

4

5

Reload File: Load a fresh copy of the current data file. This will discard any changes you've made to the current file. This will not affect any questions you have answered.

Restart: If for any reason Inventor has closed or is frozen, select this button restart it. The exam timer pauses while the application restarts.

Back: Loads the previous data file and the questions related to it.

Next: Loads the next data file and the questions related to it. If you have not answered all of the questions on the current data file, a warning will be displayed to allow you to cancel navigation or continue.

Autodesk Certified User: Inventor - Metric

Reviewing Questions

The Exam Summary appears after the final exam question. You can also move to this page by selecting **Go to Summary** from the tools menu on the exam panel.

The Exam Summary indicates the questions you have answered, not answered, marked for review, and marked for feedback. The exam timer runs until you select **Finish Exam**.

The screenshot shows the 'Exam Summary' page with a timer at 00:19:02. A table lists 7 questions with columns for 'Answered', 'Unanswered', 'Review', and 'Leave Feedback'. Red callouts 1, 2, and 3 point to the 'Question Content' header, the 'Unanswered' column, and the 'Finish Exam' button respectively.

Question Content	Answered	Unanswered	Review	Leave Feedback
1 Bell_I ipt: Create the part with a thickness of 0...	✓		⚑	💬
2 Loft_Taper_I ipt: What is the volume of the object...	✓		⚑	💬
3 Offset_I ipt: Apply a positive offset to Sketch1...		⊘	⚑	
4 View idw: Place a view...	✓			💬
5 Rotate the Face 504 degrees. What number is the to...	✓		⚑	
6 Loft_Curved_I ipt: Loft the three offset sketches ...		⊘		💬
7 Peg_I ipt: Create a circular pattern that results ...		⊘		

Tools ▾ 3 Finish Exam

On the **Exam Summary** page:

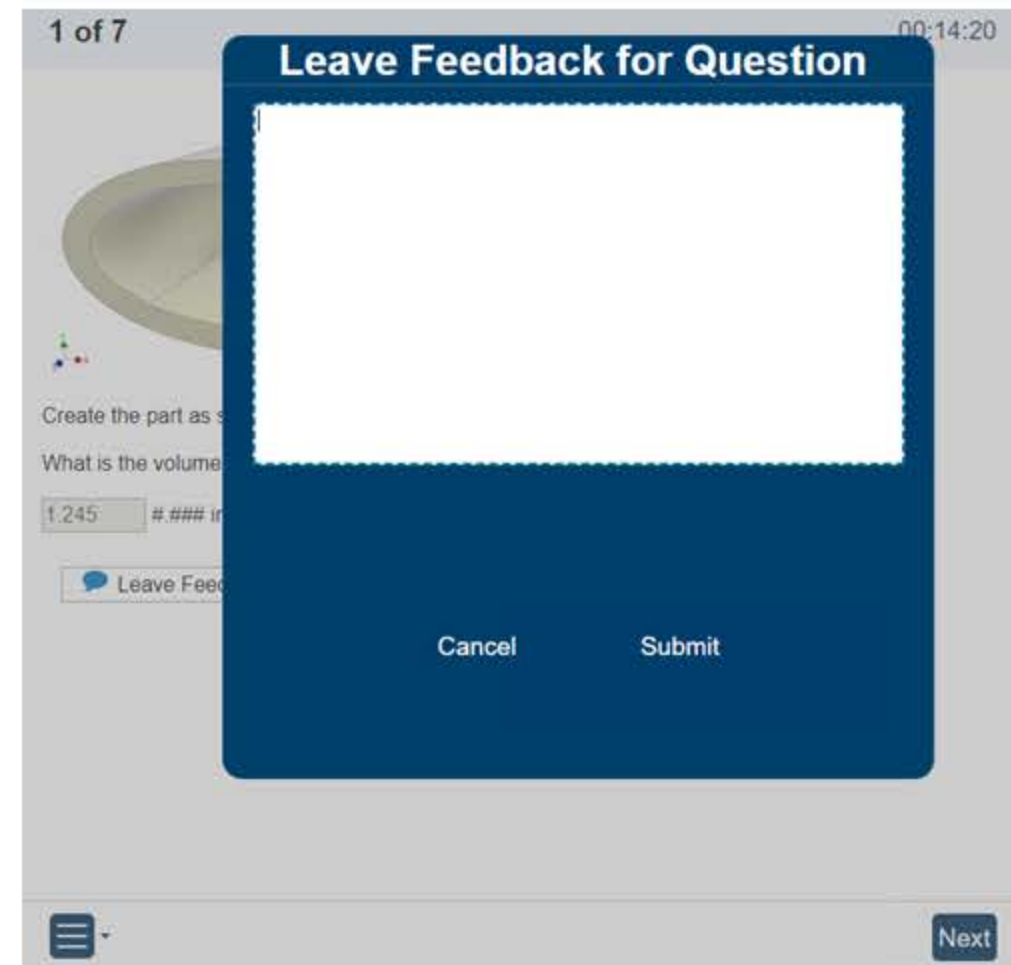
- 1 Select any of the question content listed to return to that question.
- 2 Select the **Answered**, **Unanswered**, **Review**, or **Leave Feedback** category heading or icon to return to the set of questions in that category. You can review and modify your answers, clear the review flags, and mark questions for feedback.
 - The Unanswered column indicates questions you did not respond to or for which you did not provide the required number of responses.
- 3 Select **Finish Exam** to submit your answers, stop the exam timer, and move to the feedback section of the exam. You cannot change your answers after you finish the exam.

Autodesk Certified User: Inventor - Metric

Feedback and Exam Results

After you submit your answers, you can leave feedback about individual exam questions and about the exam in general. The exam team will review your feedback and use it to improve future exam experiences. You cannot change your answers during the feedback stage.

Expand a question and select the Leave Feedback button to leave feedback about that question.



When you finish leaving feedback or the feedback period ends, select **Exit Exam** to display your exam score report.

This is the end of the tutorial. Select **Start Exam** to leave the tutorial and start the exam. **Your exam time begins when you start the exam.**